



**BANDSAW MODEL MA630**

# OPERATING INSTRUCTIONS

## MA615 BANDSAW

1. ASSEMBLE MACHINE AS PER INSTRUCTIONS IN BOOKLET SUPPLIED WITH MACHINE
2. CHECK BLADE IS FITTED CORRECTLY AS ILLUSTRATED IN BOOKLET SUPPLIED WITH MACHINE
3. ENSURE FRONT COVER IS CLOSED - AS YOU WILL NOT BE ABLE TO START THE MACHINE
4. CONNECT MACHINE TO POWER SUPPLY
5. PRESS GREEN BUTTON TO SWITCH MACHINE ON
6. NEVER LEAVE MACHINE RUNNING UNATTENDED
7. GLOVES **MUST NEVER** BE WORN WHEN OPERATING THE MACHINE
8. EAR DEFENDERS MUST BE WORN WHEN CUTTING A PRODUCT THAT PRODUCES A NOISE LEVEL HIGHER THAN 80 DECIBELS
9. IT IS RECOMMENDED THAT MATERIAL LESS THAN 150MM IN WIDTH REQUIRES A PUSHING STICK
10. THE GUARD SHOULD BE PULLED DOWN AS CLOSE AS PRACTICALLY POSSIBLE TO THE WORK PIECE TO PREVENT FRAGMENTS CAUSING HAZARD TO UNGUARDED PEOPLE IN THE VICINITY

# RECOMMENDED BLADES

8/12 VARI PITCH BIMETAL BLADES  
MOST POPULAR AND VERSITILE BLADE  
FOR GENERAL PURPOSE USE  
WILL CUT METALS, PLASTICS & WOOD  
IDEAL FOR RAISED COMPUTER FLOORS

---

6TPI BIMETAL BLADES  
WOOD, THICK ALUMINIUMS & THICK STEEL

---

14TPI BIMETAL BLADES  
THIN STEEL, PLASTIC, PERSPEX SHEET

---

24TPI PREMIUM CARBON BLADE  
THIN SHEET STEEL & CEILING PANELS

---

1/2" GRIT EDGE BLADE  
CEMENT, CONCRETE, CERAMIC & GLASS

---

3/4" CARBIDE TIPPED BLADE  
FOR USE WITH VEY ABRASIVE MATERIALS  
SUCH AS CALCIUM COMPOSITES

**TO ASSEMBLE 615.  
PLACE MACHINE ON FRONT FACE**



**FIT TWO LEGS**

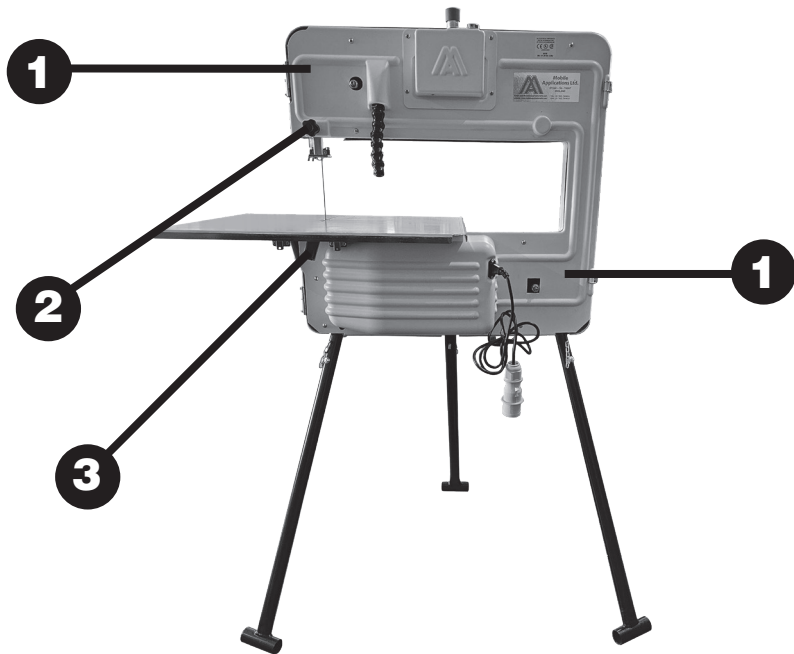


**LIFT MACHINE AND FIT FRONT LEGS**

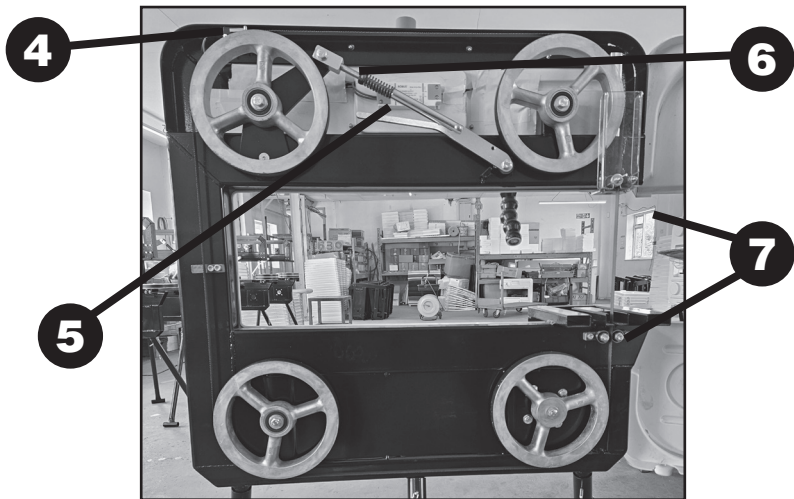


**FIT TABLE FROM BACK OF MACHINE**

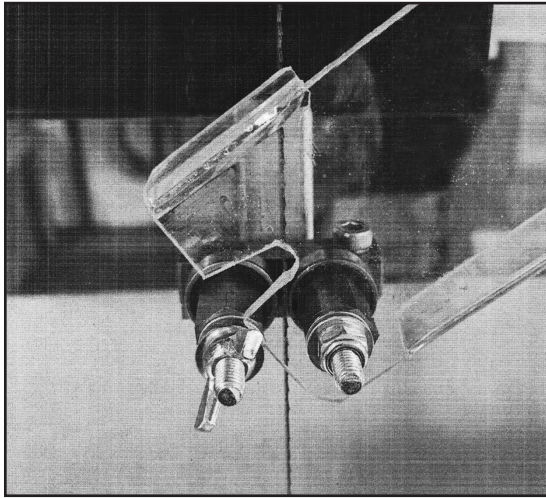




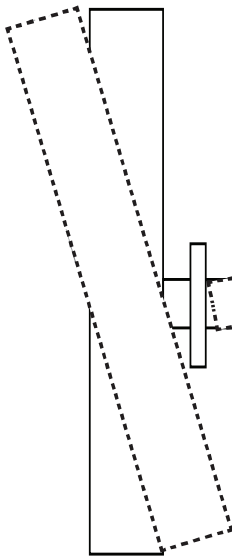
**1 = TRACKING SCREWS**  
**2 = ADJUSTABLE BLADE GUIDE**



**3 = DUST EXTRACTION POINT**  
**4 = FRONT COVER MICRO SWITCH MA 23**  
**5 = LED POWER SUPPLY**  
**6 = BLADE TENSIONER MA 11**  
**7 = BLADE GUIDE ROLLERS MA 13**



**WHEN REMOVING THE BLADE, LOOSEN WING NUT (A),  
THEN ROTATE GUARD TO THE RIGHT**

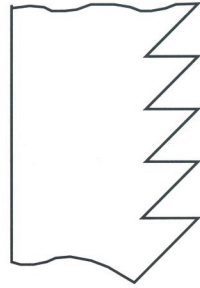


TURN ALLEN SCREW TO  
TIP WHEEL BACK OR  
FORWARD FOR TRACKING

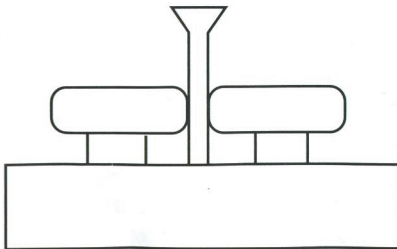
1. STAND AT BACK OF MACHINE
2. CLOSE MICRO SWITCH (4) WITH A SMALL  
PIECE OF CARD
3. START MACHINE AND TURN ALLEN SCREW (1)  
LEFT OR RIGHT TO MAKE BLADE RUN TRUE

*(THE SCREWS ARE MEANT TO BE OUT OF CENTRE)*

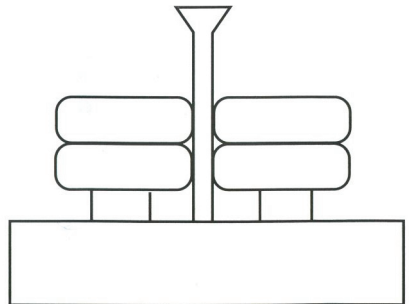
WHEN FITTING NEW BLADE, ALWAYS ENSURE THAT THE TEETH POINT DOWNWARDS



THE MACHINE CAN BE FITTED WITH 3/4" BLADE SIMPLY BY REPLACING ROLLER GUIDE FOR DOUBLE TYPE



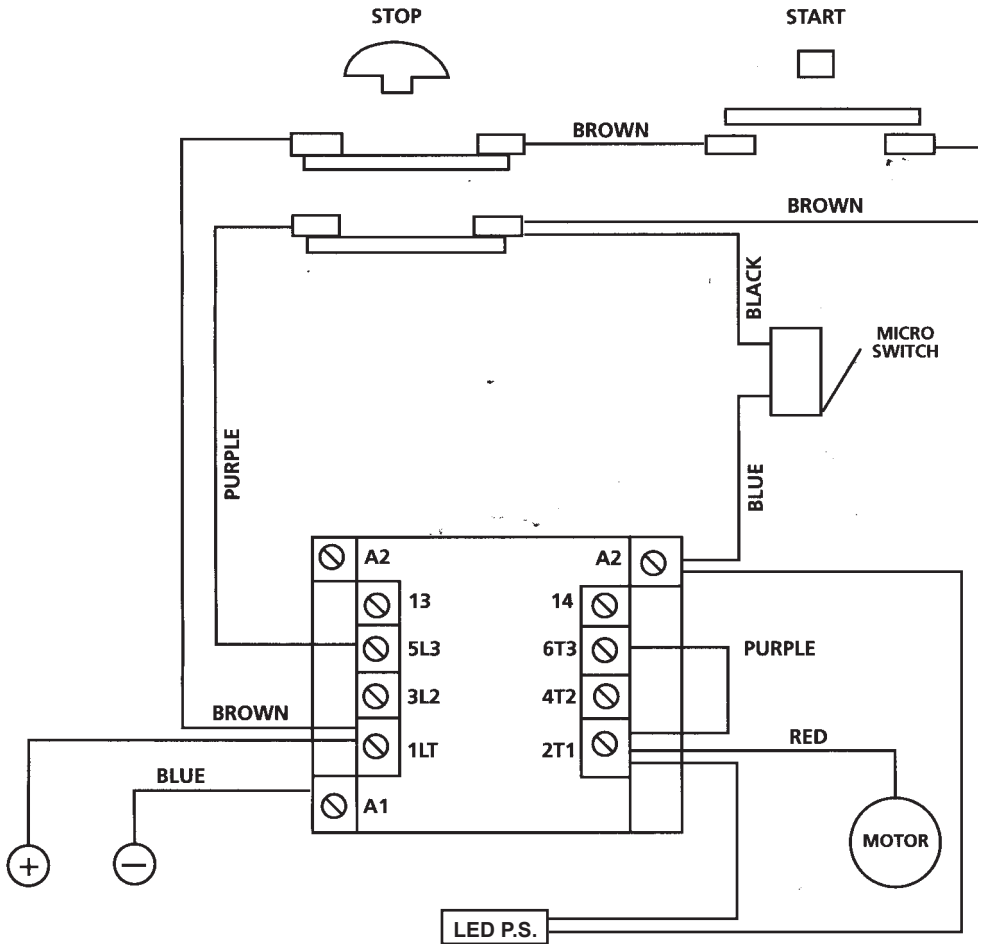
**STANDARD GUIDE**



**DOUBLE GUIDE**

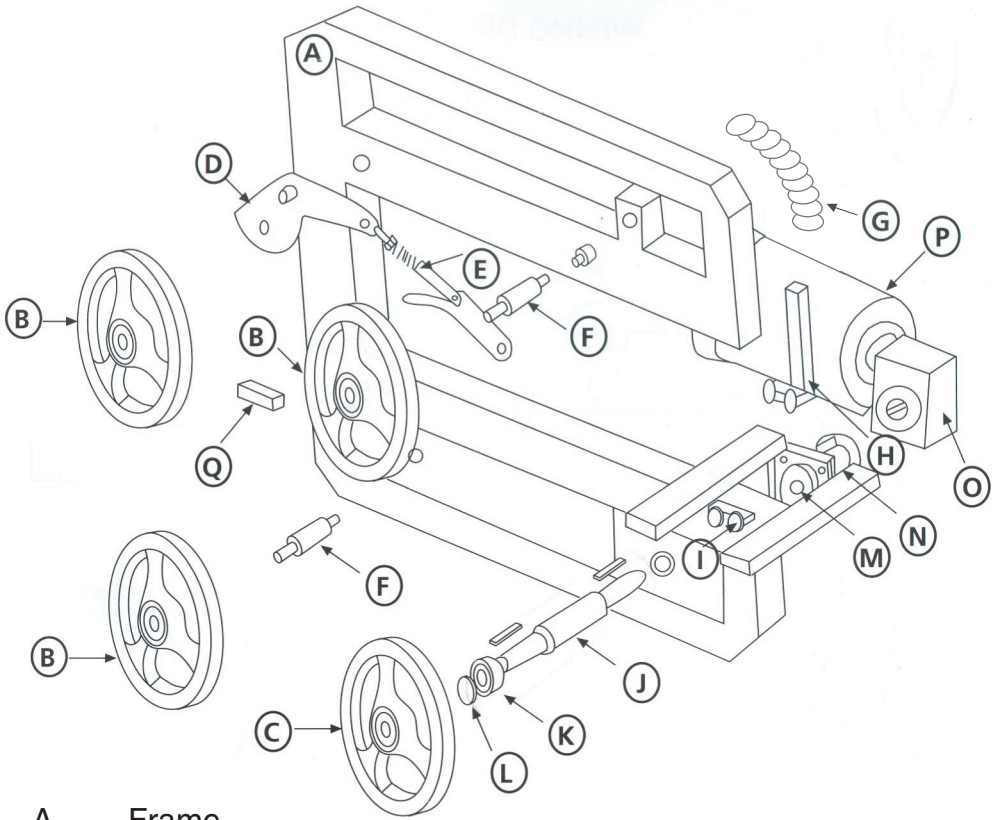


# WIRING DIAGRAM



## PARTS FOR MA630 BANDSAW

Part No.	Part Description
MA01	MOTOR
MA02	GEARBOX
MA03	GEARBOX SPACER & LOCATOR
MA04	DRIVE SHAFT COMPLETE
MA05	IDLE SHAFT
MA06	DRIVE WHEEL
MA07	IDLE WHEEL
MA08	FRONT COVER
MA09	REAR COVER
MA10	ELECTRIC BOX
MA11	TENSION ASSEMBLY
MA12	LIGHT RELAY
MA13	LIGHT
MA14	LIGHT HOLDER
MA15	TOP BLADE GUIDE
MA16	BACK RUB BLOCK
MA17	TABLE
MA18	TABLE LATCH - UNDERSIDE OF TABLE
MA19	TABLE CLIP - ON M/C
MA20	LEGS PER SET
MA21	STARWHEEL
MA22	BLADE GUARD
MA23	MICROSWITCH
MA24	COVER HINGE
MA25	COVER CLIP
MA26	NORTH AMERICAN POWER LEAD
MA27	STOP SWITCH TOP
MA28	STOP SWITCH BASE
MA29	START SWITCH TOP
MA30	START SWITCH BASE
MA31	MOTOR CONTACTOR
MA32	SET OF COTTER PINS
MA33	BANDSAW CABLE LEAD - UK
MA34	110 VOLT PLUG
MA35	ADJUSTING SPRING
MA36	DRIVE WHEEL SPACER
MA37	IEC INLET SOCKET



- A. Frame
- B. Idle Wheel MA07
- C. Drive Wheel MA06
- D. Swinging Arm MA12
- E. Tension Assembly MA11
- F. Idle Shaft MA05
- G. Light Assembly
- H. Top Blade Guide MA15
- I. Bottom Blade Guide MA23
- J. Drive Shaft MA04
- K. Bearing MA09
- L. Spacer
- M. Gearbox Locator
- N. Gearbox Spacer MA03
- O. Gearbox MA02
- P. Motor MA01
- Q. Back Rub Block MA16

## **UK CONTACT DETAILS**

Tel 01782 790824

Fax 01782 790825

Email [sales@mobileapplicationsltd.com](mailto:sales@mobileapplicationsltd.com)

[www.mobileapplicationsltd.com](http://www.mobileapplicationsltd.com)

## **US CONTACT DETAILS**

Tel/Fax 0012 014 937 191

Email [lynchcheryl3@aol.com](mailto:lynchcheryl3@aol.com)